



PER ANNUM

£45,000 Per Annum

Hackney Road

London, E2 8NA

DESCRIPTION

A unique opportunity to acquire a prominent Hackney Road commercial unit, boasting heavy footfall and a proven track record as a thriving hair, beauty, sunbed salon and day spa. The fit out in situ is of exceptional quality and all equipment is available to remain, offering a true turnkey solution.

The property features electric roller shutters leading into the unit's reception area, which has a custom-made front desk and stairs leading up to the main floor which is home to a nail bar with 2 customer stations along with 6 hairdressing stations. Skylights bring in plenty of natural light. There is a colour mixing station with sink, as well as a kitchenette (including a washing machine) and a private treatment room to the rear of the property.

There is an open stairway with good ceiling height leading downstairs to the lower floor, which contains five fully equipped treatment rooms and an opulent waiting area with 2 pedicure stations. The treatment rooms are currently fitted as two rooms with Ergoline lay-flat sunbeds, one room with Ergoline vertical sunbed, a spray room and a beauty/treatment room. The basement includes a customer facing W/C.

LOCATION

Set in Shoreditch, the building is situated directly between Columbia Road Flower Market and Broadway Market in the beating heart of vibrant East London. The area has excellent foot-fall with a dense residential populous and 1,000's of companies within a 15 minute walking radius. The area is particularly popular with 'creatives' and those working in the tech industries or launching new start-ups. Hackney road is a destination location with a thriving art scene, trendy bars, and independent cafes, stores and boutiques making it a cultural hotspot and an exciting area to buy a property. Bustling Brick Lane and Redchurch Street are both within a short walk.

The unit is within a short walk of Hoxton and Shoreditch High Street Overground stations, providing seamless connections across London. Old Street, Bethnal Green and Liverpool Street Underground stations are also nearby, granting easy access to the Northern, Central, Circle, Hammersmith & City, and Metropolitan lines.

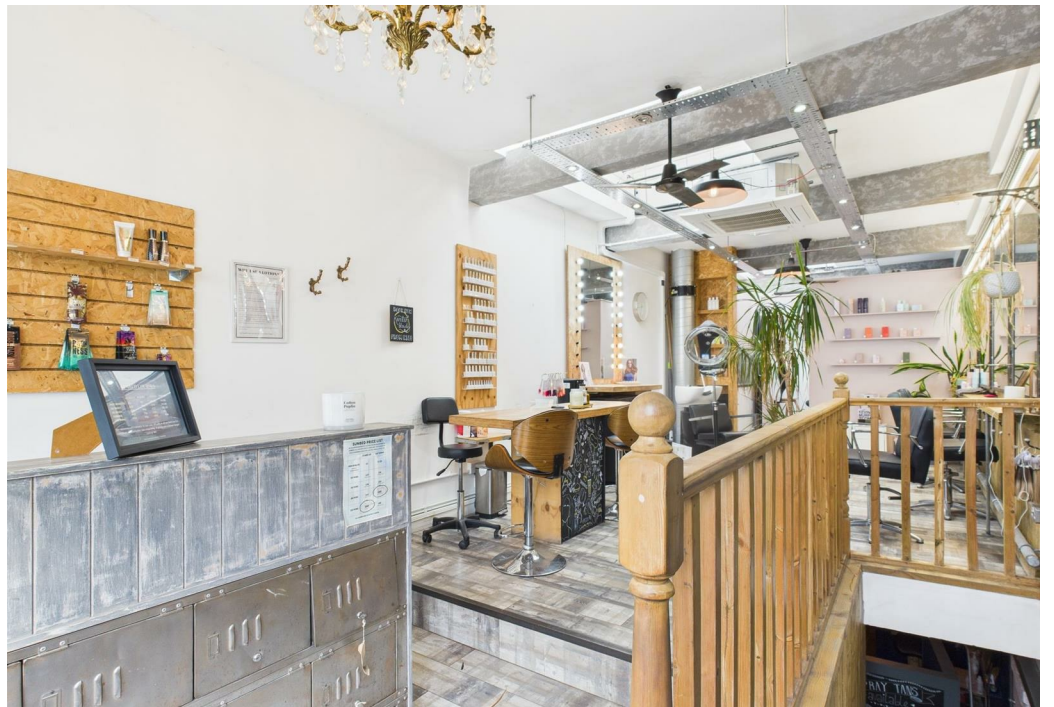
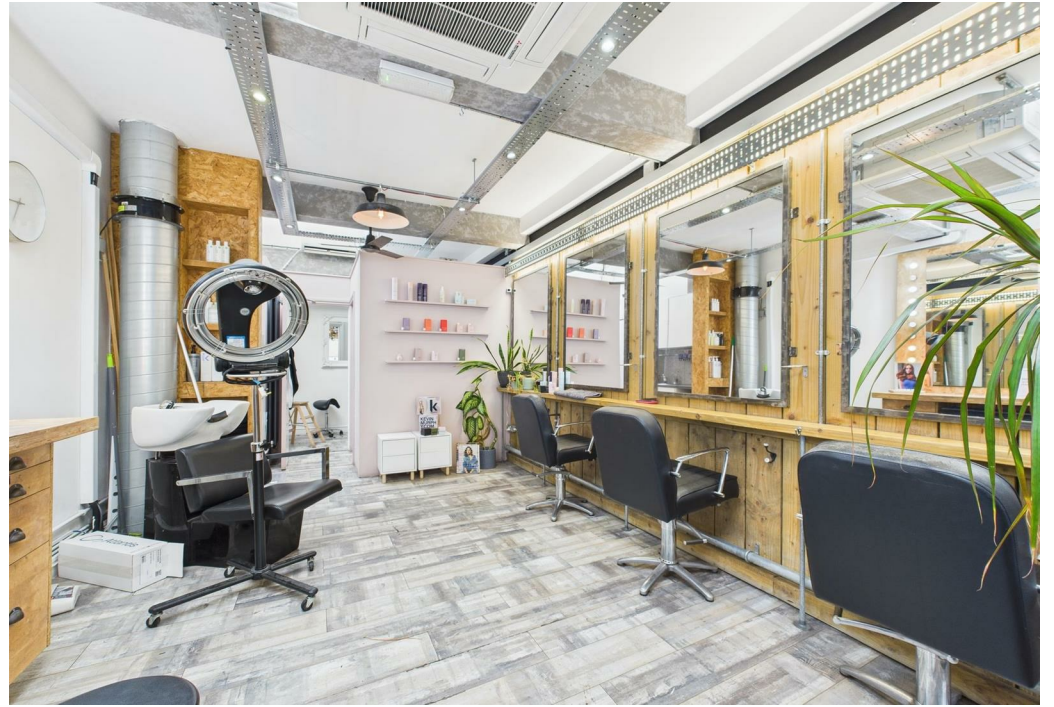
Multiple major bus routes—including the 26, 55, 149, 205, 242, and 243—stop just steps from the property, ensuring convenient travel from all corners of the city, day and night.

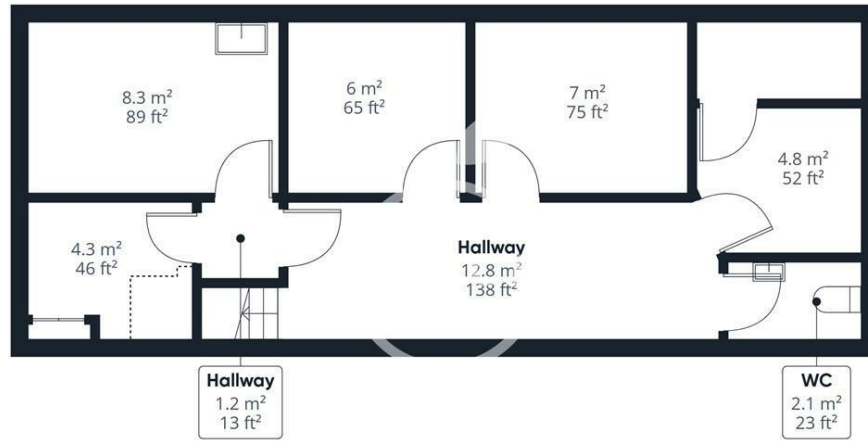
AMENITIES

Fully-fitted and equipped beauty salon and day spa with the following:

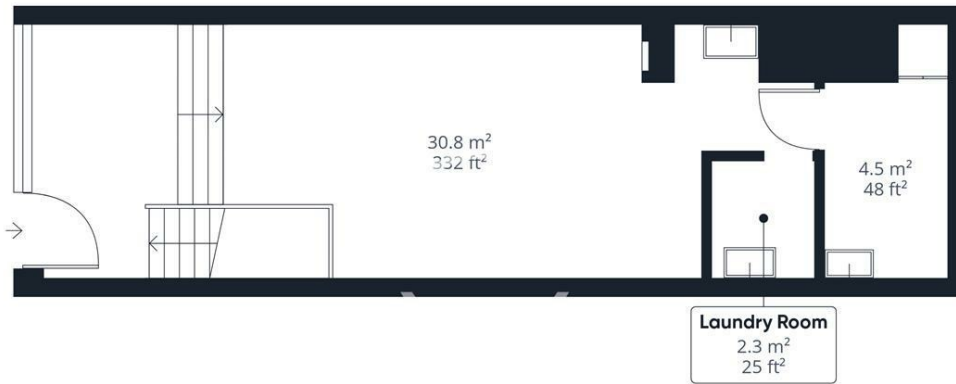
- 6 x open plan hair dressing stations
- 2 x nail bar stations
- 2 x private treatment rooms
- 3 x Ergoline equipped tanning rooms
- 1 x spray tan salon
- 1 x kitchenette
- 1 x colour prep station







Floor 0



Floor 1

Approximate total area⁽¹⁾

92.4 m²
995 ft²

Reduced headroom

0.7 m²
8 ft²

(1) Excluding balconies and terraces

Reduced headroom
..... Below 1.5 m/5 ft.

Calculations reference the RICS IPMS 3C standard. Measurements are approximate and not to scale. This floor plan is intended for illustration only.

GIRAFFE360

Energy Efficiency Rating

	Current	Potential
<i>Very energy efficient - lower running costs</i>		
(92 plus) A		
(81-91) B		
(69-80) C		
(55-68) D	60	60
(39-54) E		
(21-38) F		
(1-20) G		
<i>Not energy efficient - higher running costs</i>		
England & Wales	EU Directive 2002/91/EC	

Agents Note: Whilst every care has been taken to prepare these particulars, they are for guidance purposes only. All measurements are approximate and are for general guidance purposes only and whilst every care has been taken to ensure their accuracy, they should not be relied upon and potential buyers/tenants are advised to recheck the measurements

OFFICE ADDRESS
88 Cheshire Street
London
E2 6EH

OFFICE DETAILS
0207 739 6969
info@peachproperties.com
www.peachproperties.com